

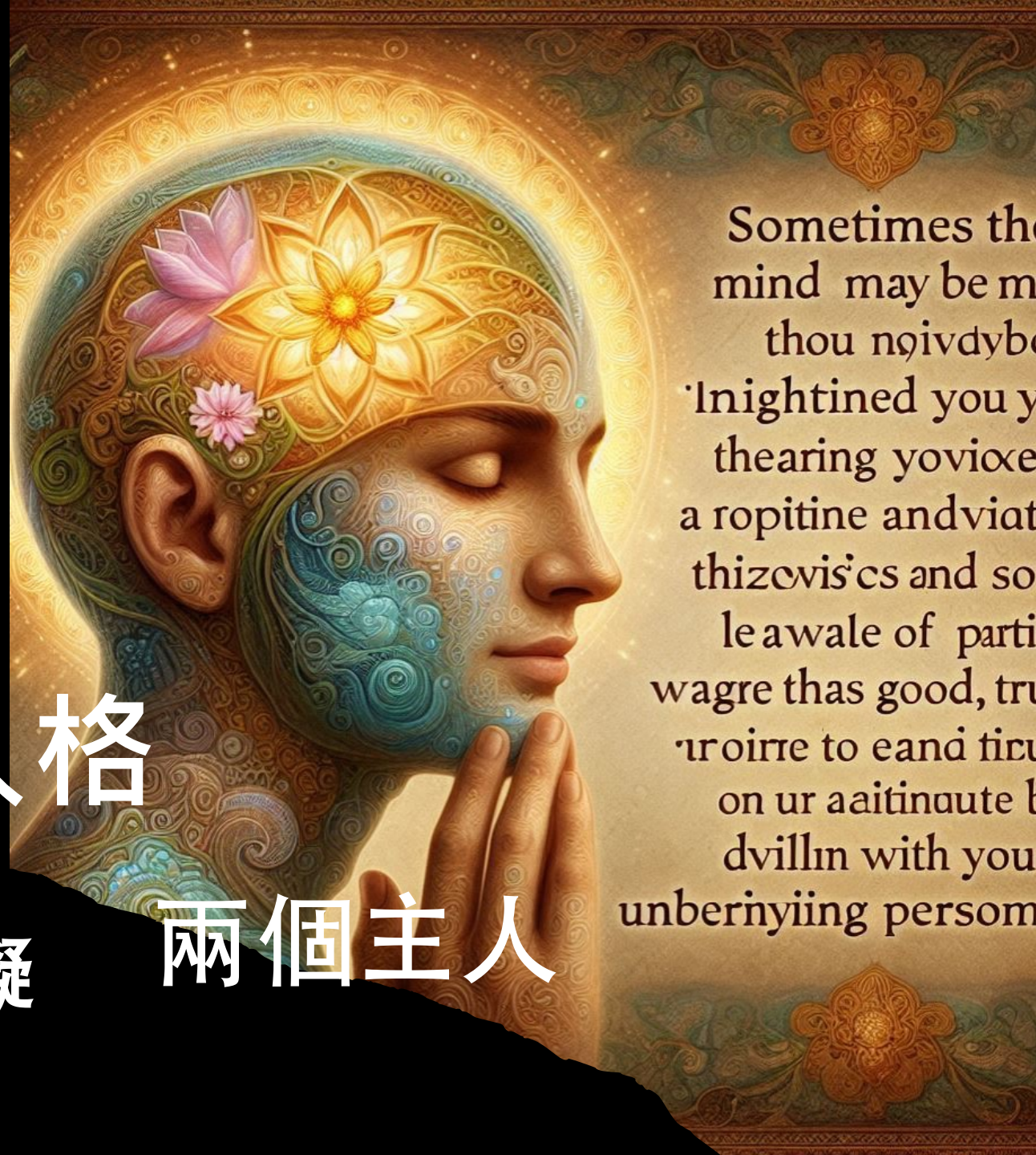
# 淺談玉苒廈之書

59

## 調整者和人類人格

內住的物質性障礙

兩個主人



Sometimes the  
mind may be m  
thou noivdybe  
'Inightined you y  
thearing yovioxe  
a ropitine andviat  
thizevis'cs and so  
leawale of parti  
wagre thas good, tru  
'roirre to eand tircu  
on ur aaitinaute b  
dvillin with you  
unbernyiing persom



The background is a classical painting. In the center, a young man with curly hair and a halo-like glow around his head stands with his arms slightly out. He is surrounded by several other figures. To his left and right are large, muscular, winged figures (angels or cherubs) with their wings spread. Below the central figure, a group of bearded men, likely philosophers or scholars, are seated or standing, some holding books or scrolls. The background is filled with more figures, some appearing to be in a celestial or divine realm. The overall color palette is warm, dominated by browns, golds, and soft blues. The lighting is dramatic, highlighting the central figure and the wings of the angels.

# 調整者和人類人格

---



人類之間較高形式的智能交流受到內住調整者的極大幫助。動物確實具有同伴之情，但它們無法彼此傳達概念；它們可以表達情緒，但不能表達思想和理想。同樣地，在被贈與思想調整者之前，具動物起源的人類也無法經歷與同伴之間高等類型的智性交流或靈性共融，儘管當這些進化受造物發展出語言能力時，他們便走在接受調整者的康莊大道上。








- 109:4.2 (1198.5) 動物確實以一種粗糙的方式相互交流，但在這種原始接觸中幾乎沒有或可說完全沒有人格 ( there is **little** or **no** personality )。調整者並非人格；他們是前人格 (prepersonal) 存有。但是他們的確來自人格的源頭，他們的臨在確實增強了人類人格的質量性 (qualitative) 顯現；若調整者有過先前的經驗時，這一點尤為真實。

... form of intellectual intelligent communication  
... are gently aided by the indwelling ad  
... can extract emotions but not the



The background features a large, glowing Earth with a central starburst of light. The starburst is a bright yellow and orange sun-like core with numerous thin, branching lines radiating outwards, resembling a neural network or energy field. The Earth is shown in a cross-section, revealing the continents and oceans. The overall color palette is dominated by blues, oranges, and yellows, with a dark, starry space background. Several smaller planets and moons are visible in the distance, some with their own glowing halos. The image has a high-tech, ethereal, and energetic feel.

調整者的類型與人類人格表達的潛能有很大關係。自古以來，玉苒廈許多偉大的**智性和靈性領袖**之所以能發揮他們的影響力，主要是因為他們**內住的調整者**之卓越性和先前的經驗。



其他人因拒絕續存而失去的…

另個人得到了





現在在玉苒廈上服務的調整者中，  
沒有一位之前曾在這世界上…



The background is a highly detailed and colorful illustration. It features a central figure with a golden, muscular torso and a blue, translucent upper body. The figure is seated in a meditative pose, with multiple arms extending outwards. The figure's head is surrounded by a glowing, golden aura. The background is filled with intricate patterns, including floral motifs, geometric shapes, and a sense of depth. The overall color palette is dominated by gold, blue, and purple, with a dark, almost black background. The text '調整者內住的物質性障礙' is overlaid in the center in a bold, white font.

# 調整者內住的物質性障礙



109:5.1 (1199.2) 當人類心智自由流動於解放但受控制的創造性想像力管道時，至高類自主行動的調整者常常能為其提供具有靈性意義的因素。在這種時刻，有時在睡眠期間，調整者能捕捉心智之流，使其停滯，然後轉移這些想法的進程；這一切的目的都是為了在超意識的更高層次深處實現深層的靈性轉化。以此方式，心智力和能量得以更充分地調整至當下和未來靈性層面的接觸音調之調性。



The Supreme and self-acting Adjusters are ever active and contribute factors and flows of factors the liberated but channels of creative imagination and some times, sometimes, they stay, the flow, and then the idea passes and then it has all these to do in deeper recesses of the Superconscious



# 調整者的神性聲音與人 類心智的局限

- 109:5.2 (1199.3) 有時候心智是可能受到啟發，而聽見那持續在你之內說話的神性聲音，使你能部分地意識到那持續內住於你的潛在人格所具有的智慧、真、善和美。
- 109:5.3 (1199.4) 但是你那不穩定且快速變化的心智態度，經常導致調整者的計劃受阻和工作中斷。他們的工作不僅受到凡人種族與生俱來本性的干擾，而且這一侍奉也因為你自己的先入為主的觀念、根深蒂固的想法和長期存在的偏見而被大大地延緩。由於這些障礙，很多時候只有他們未完成的創造浮現在意識中，概念的混淆則是無法避免的。因此，在審視心智狀況時，安全之道唯有及時認清每一個想法和體驗的實際和根本是什麼，完全不去考慮它本可能是什麼。



Sometimes the mind may be in lightened  
an at madine ~~some~~ steak spe. attiln within



# 兩個主人

---

- 109:5.4 (1199.5) 生命中的重大問題在於調整生活中的祖先遺傳的傾向，以適應由神秘告誡者之神聖臨在所引發的靈性驅動力的需求。雖然在宇宙和超級宇宙的生涯中，沒有人能事奉兩個主人，但在你們現今生活在玉萬廈上的一生中，每個人都不得不事奉兩個主人。他必須熟練於持續的人類世俗妥協之藝術，同時只向一位主人保持靈性的忠誠；這就是為什麼那麼多人踉蹌而失敗，日漸疲憊並屈服於進化掙扎的壓力。



- 109:5.5 (1199.6) 雖然大腦稟賦和電化學過度控制的遺傳特徵都會限制調整者活動的有效範圍，但是沒有任何遺傳缺陷（在正常心智中）會阻礙最終的靈性成就。遺傳可能會干擾人格征服的速度，但不會阻止揚升歷程的最終完善。如果你與你的調整者合作，這份神聖的禮物遲早將演化出不朽的靈質性靈魂，並在與其融合之後，將這新的受造物呈現給地方宇宙之主權主位聖子，並最終呈現給天堂島上的調整者之父 (Father of Adjusters)。

